



## CERTIFICATE of ANALYSIS (COA)

<b>COMMON NAME</b>	Lavandin, Grosso - Organic
<b>LATIN NAME</b>	<i>Lavandula hybrida</i> (synonym of <i>Lavandula x intermedia</i> )
<b>COUNTRY OF ORIGIN</b>	Spain
<b>CULTIVATION METHOD</b>	Certified Organic (USDA, NOP)
<b>TYPE</b>	Essential Oil
<b>EXTRACTION METHOD</b>	Steam Distilled
<b>PLANT PART</b>	Flowering Tops
<b>USE</b>	Aromatherapy, Natural Perfumery, Incense

<b>SKU</b>	500
<b>LOT #</b>	21
<b>MANUFACTURING DATE</b>	November 2022
<b>BEST BY DATE</b>	November 2025

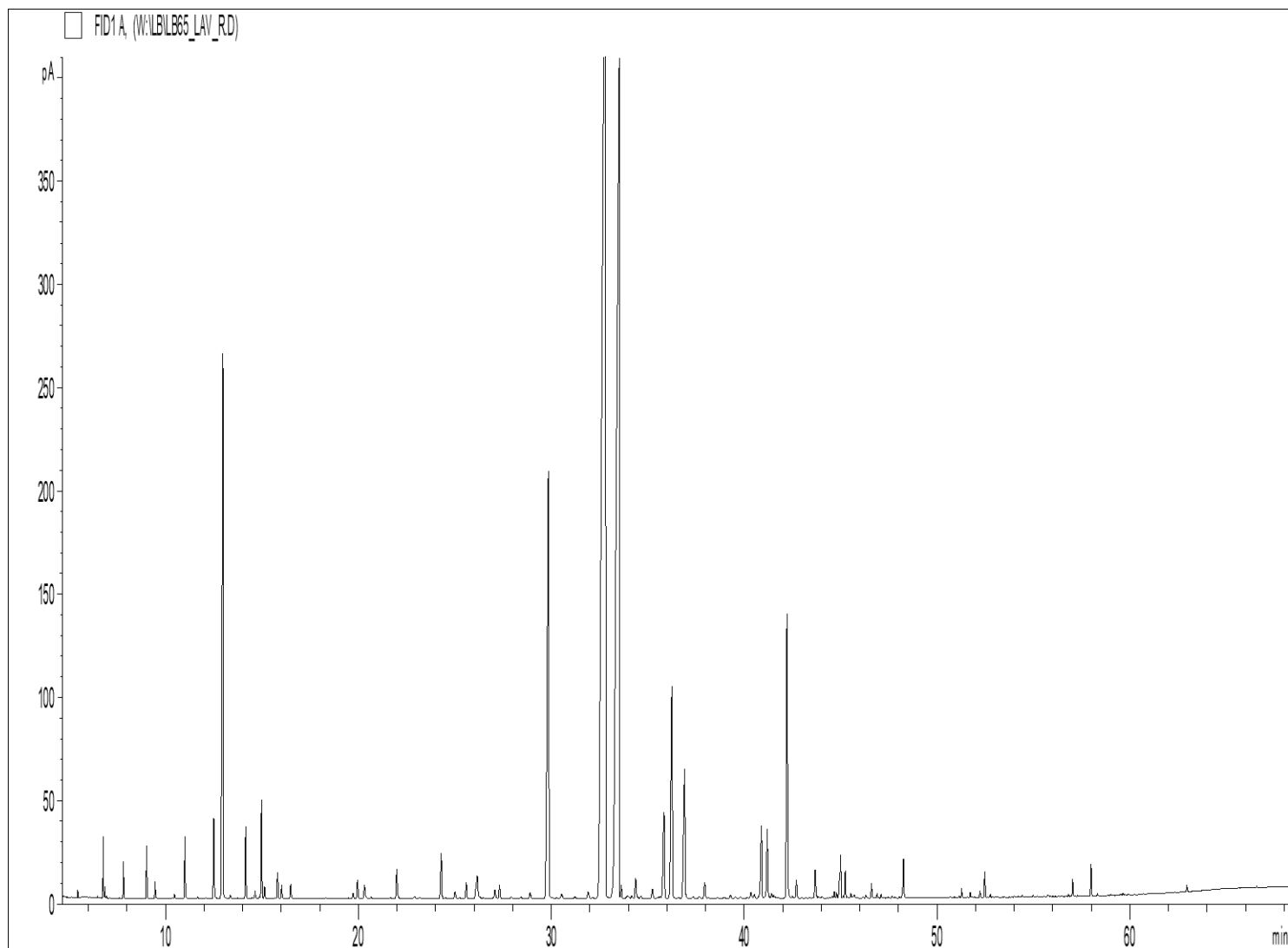
	<b>SPECIFICATIONS (Range)</b>	
<b>SPECIFIC GRAVITY @20°C</b>	0.888-0.898	0.891
<b>REFRACTIVE INDEX @20°C</b>	1.455-1.465	1.4611
<b>OPTICAL ROTATION @20°C</b>	-9° to -1°	<i>na</i>

<b>PHYSICAL APPEARANCE</b>	Transparent liquid	<i>Conforms</i>
<b>COLOR</b>	Colorless to pale yellow	<i>Conforms</i>
<b>ODOR</b>	Fresh, camphoraceous, herbal/floral, clear, penetrating, green.	<i>Conforms</i>
<b>SOLUBILITY</b>	Soluble in alcohol and fixed oils	
<b>SPECIAL USE INSTRUCTIONS</b>	Dilute before use	

<b>PRIMARY CONSTITUENTS</b>	Linalool (25-40%), Linalyl Acetate (22-38%), Camphor (4-10%).
-----------------------------	---

# THIRD PARTY LAB ANALYSIS (GCMS)

## CHROMATOGRAPHIC PROFILE:



- ORGANIC LAVANDIN GROSSO EO - SKU 500 LOT 21 -

Peaks	RT (min)	Compound name	%	Standard (%)	Allergens (%)
1	5.44	HEXANE, 1-METHOXY-	0.04		
2	6.47	TRICYCLEN	0.01		
3	6.77	alpha-PINENE	0.33		0.33
4	6.84	alpha-THUYENE	0.06		
6	7.82	CAMPHENE	0.23		
7	9.02	beta-PINENE	0.37		0.37
8	9.45	SABINENE	0.12		
9	10.46	delta3-CARENE	0.03		
10	11.00	<b>beta-MYRCENE</b>	<b>0.47</b>		
11	11.08	alpha-PHELLANDRENE	0.01		
12	11.66	alpha-TERPINENE	0.02		0.02
13	12.09	1,8-CINEOLE, 2,3-DEHYDRO-	0.02		
14	12.50	<b>LIMONENE</b>	<b>0.75</b>		0.75
15	12.97	<b>1,8-CINEOLE</b>	<b>6.28</b>		
16	13.35	BUTYL BUTYRATE	0.03		
17	14.15	<b>cis-beta-OCIMENE</b>	<b>0.62</b>		
18	14.64	gamma-TERPINENE	0.07		
19	14.85	ALIPHATIC ESTER	0.02		
20	14.98	<b>trans-beta-OCIMENE</b>	<b>0.88</b>		
21	15.13	3-OCTANONE	0.11		
22	15.67	m-CYMENE	0.01		
23	15.81	p-CYMENE	0.25		
24	16.02	HEXYL ACETATE	0.12		
25	16.49	TERPINOLENE	0.14		0.14
26	19.72	HEXYL PROPIONATE	0.05		
27	19.95	HEXYL METHYLPROPIONATE	0.20		
28	20.31	1-HEXANOL	0.19		
29	20.65	ALIPHATIC ESTER	0.02		
30	21.64	ALLO-OCIMENE	0.02		
31	21.99	1-OCTEN-3-YL ACETATE	0.34		
32		3-HEXEN-1-OL			
33	22.92	3-OCTANOL	0.03		
34	23.17	ROSEFURAN	0.01		
35	24.29	<b>HEXYL BUTYRATE</b>	<b>0.55</b>		
36	24.50	ALIPHATIC ESTER	0.01		
37	25.01	HEXYL 2-METHYLBUTYRATE	0.08		
38	25.23	alpha,p-DIMETHYLSTYRENE	0.01		
39	25.59	LINALOOL cis-OXIDE	0.18		
40	26.12	HEXYL 3-METHYLBUTYRATE	0.15		
41	26.16	1-OCTEN-3-OL	0.28		
42	26.25	ALIPHATIC ESTER	0.03		
43	27.07	trans-THUYANOL	0.11		
44	27.31	LINALOOL trans-OXIDE	0.15		

- ORGANIC LAVANDIN GROSSO EO - SKU 500 LOT 21 -

Peaks	RT (min)	Compound name	%	Standard (%)	Allergens (%)
45	27.92	OCTYL ACETATE	0.02		
46	28.42	alpha-CAMPHOLENAL	0.02		
47	28.90	DAUCENE	0.08		
48	29.85	<b>CAMPHOR</b>	<b>7.36</b>		7.36
49	30.53	beta-BOURBONENE	0.07		
50	31.22	alpha-GURJUNENE	0.03		
51	31.91	BERGAMOTENE ISOMER	0.11		
52	32.14	cis-THUYANOL	0.02		
53	32.80	<b>LINALOOL</b>	<b>38.15</b>		38.15
54	33.51	<b>LINALYL ACETATE</b>	<b>23.83</b>		23.83
55	33.63	BERGAMOTENE ISOMER	0.11		
56	33.95	alpha-cis-BERGAMOTENE	0.05		
57	34.17	BORNYL FORMATE	0.03		
58	34.37	alpha-SANTALENE	0.25		
59	34.44	epsilon-CADINENE	0.01		
60	34.64	BORNYL ACETATE	0.03		
61	35.24	alpha-trans-BERGAMOTENE	0.13		
62	35.55	beta-ELEMENE	0.01		
63	35.64	beta-CUBEBENE	0.03		
64	35.84	beta-CARYOPHYLLENE	1.32		1.32
65	36.25	<b>TERPINENE-4-OL</b>	<b>3.39</b>		
66	36.59	TERPENIC COMPOUND	0.01		
67	36.90	<b>LAVANDULYL ACETATE</b>	<b>2.08</b>		
68	37.34	HEXYL CAPROATE	0.02		
69	37.66	MYRTENAL	0.03		
70	37.95	HEXYL TIGLATE	0.23		
71	38.14	SESQUITERPENE	0.01		
72	38.61	SESQUITERPENE	0.02		
73	38.97	FARNESENE ISOMER	0.02		
74	39.28	FARNESENE ISOMER	0.05		
75	39.55	trans-PINOCARVEOL	0.02		
76	39.81	FARNESENE ISOMER	0.03		
77	40.16	FARNESENE ISOMER	0.02		
78	40.34	ZONARENE	0.09		
79	40.53	alpha-HUMULENE	0.05		
80	40.77	delta-TERPINEOL	0.02		
81	40.89	E-beta-FARNESENE	0.94		
82	41.11	trans-VERBENOL	0.03		
83	41.19	<b>LAVANDULOL</b>	<b>0.88</b>		
84	41.42	LAVANDULYL ISOBUTYRATE	0.06		
85	41.52	Z-beta-FARNESENE	0.04		
86	42.22	<b>BORNEOL</b>	<b>2.41</b>		
87	42.30	<b>alpha-TERPINEOL</b>	<b>1.03</b>		1.03

- ORGANIC LAVANDIN GROSSO EO - SKU 500 LOT 21 -

Peaks	RT (min)	Compound name	%	Standard (%)	Allergens (%)
88	42.50	VERBENONE	0.03		
89	42.71	GERMACRENE D	0.24		
90	43.68	NERYL ACETATE	0.28		
91	43.71	beta-BISABOLENE	0.08		
92	43.87	BICYCLOGERMACRENE	0.02		
93	44.04	cis-PYRANIC LINALOOL OXIDE	0.02		
95	44.56	SESQUITERPENE	0.02		
96	44.67	LAVANDULYL BUTYRATE	0.06		
97	44.79	E,E-alpha-FARNESENE	0.05		
98	45.00	GERANYL ACETATE	0.56		0.56
99		gamma-CADINENE			
100	45.13	trans-PYRANIC LINALOOL OXIDE	0.02		
101	45.24	LAVANDULYL METHYLBUTYRATE	0.24		
102	45.33	alpha-CURCUMENE	0.01		
103	45.53	beta-SESQUIPELLANDRENE	0.04		
104	45.62	trans-alpha-BISABOLENE	0.01		
105	45.71	SESQUITERPENE	0.04		
106	46.16	NERYL PROPIONATE	0.01		
107	46.30	CAMPHOLENOL	0.03		
108	46.60	NEROL	0.14		
109	46.89	cis-EPOXYLINALYL ACETATE	0.04		
110	47.10	trans-EPOXYLINALYL ACETATE	0.03		
112	47.67	cis-CALAMENENE	0.02		
113	47.80	trans-CALAMENENE	0.01		
114	48.05	m-CYMENE-8-OL	0.01		
115	48.22	p-CYMENE-8-OL	0.06		
116	48.26	GERANIOL	0.35		0.35
117	50.68	ALIPHATIC ESTER	0.02		
119	51.14	ALIPHATIC ESTER	0.02		
120	51.27	3,7-OCTADIENE-2,6-DIOL, 2,6-DIMETHYL-	0.07		
121	51.71	cis-3-HEXENYL BUTYRATE	0.04		
122	52.22	ISOCARYOPHYLLENE OXIDE	0.05		
123	52.47	CARYOPHYLLENE OXIDE	0.22		
124	52.76	SESQUITERPENOL	0.03		
125	53.99	AROMATIC COMPOUND	0.01		
127	54.41	Epi-CUBENOL	0.02		
128	54.97	SESQUITERPENIC OXIDE	0.01		
129	55.76	SESQUITERPENIC OXIDE	0.04		
130	56.82	cis-3-HEXENYL BENZOATE	0.02		
131	57.03	T-CADINOL	0.13		
133	57.98	alpha-BISABOLOL	0.24		
134	58.30	SESQUITERPENIC OXIDE	0.02		
135	62.95	COUMARIN	0.07		0.07

- ORGANIC LAVANDIN GROSSO EO - SKU 500 LOT 21 -

Peaks	RT (min)	Compound name	%	Standard (%)	Allergens (%)
		<b>TOTAL</b>	<b>99.92</b>		<b>74.26</b>