



CERTIFICATE of ANALYSIS (COA)

COMMON NAME	Patchouli - Organic
LATIN NAME	<i>Pogostemon cablin</i>
COUNTRY OF ORIGIN	Sri Lanka
CULTIVATION METHOD	Certified Organic (USDA, NOP)
TYPE	Essential Oil
EXTRACTION METHOD	Steam Distilled
PLANT PART	Leaves
USE	Aromatherapy, Natural Perfumery, Incense.

SKU	760
LOT #	20
MANUFACTURING DATE	June 2023
BEST BY DATE	June 2033

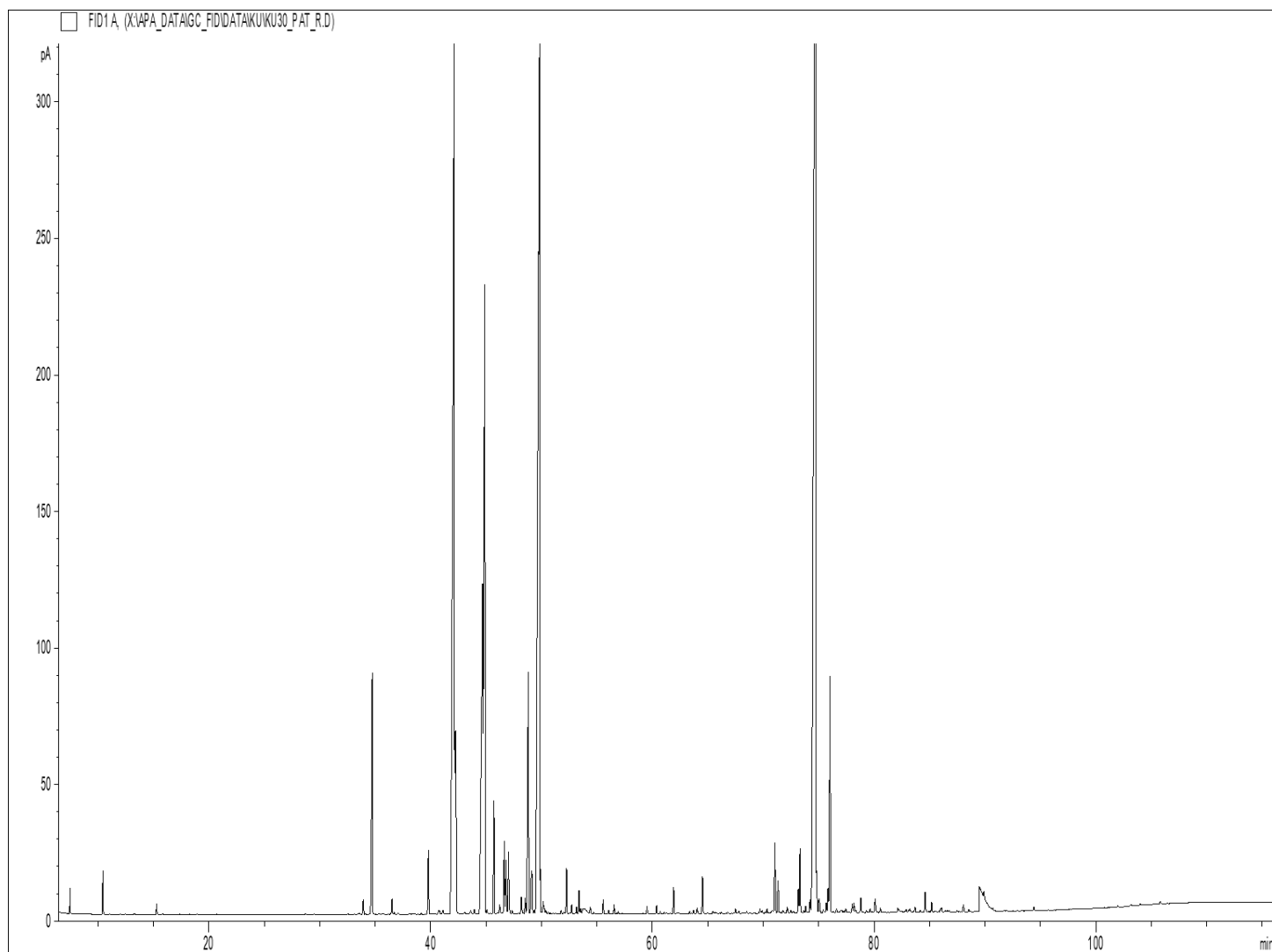
	SPECIFICATIONS (Range)	
SPECIFIC GRAVITY @20°C	0.940 – 0.980	0.961
REFRACTIVE INDEX @20°C	1.400 – 1.600	1.5094
OPTICAL ROTATION @20°C	-70° to +1°	-49.1°

PHYSICAL APPEARANCE	Clear liquid	<i>Conforms</i>
COLOR	Yellow to dark brown	<i>Conforms</i>
ODOR	Sweet, earthy, deep and rich.	<i>Conforms</i>
SOLUBILITY	Soluble in alcohol and fixed oils	
SPECIAL USE INSTRUCTIONS	Dilute before use	

PRIMARY CONSTITUENTS	Patchouli Alcohol, Delta-Guaiene, Alpha-Bulnesene.
----------------------	--

THIRD PARTY LAB ANALYSIS (GCMS)

CHROMATOGRAPHIC PROFILE :



- ORGANIC PATCHOULI EO - SKU 760 LOT 20 -

Peaks	RT (min)	Compound name	%	Standard (%)	Allergens (%)
1	7.47	alpha-PINENE	0.11		0.11
2	10.44	beta-PINENE	0.25		0.25
3	15.29	LIMONENE	0.07		0.07
4	33.91	delta-ELEMENE	0.14		
5	34.72	beta-PATCHOULENE	2.43	1.8 - 3.5	
6	-	alpha-COPAENE	Tr.	Tr. - 1.0	
7	36.51	PENTADECANE	0.14		
8	36.70	SESQUITERPENE	0.02		
9	37.06	beta-BOURBONENE	0.01		
10	39.79	CYCLOSEYCHELLENE	0.58		
11	40.77	SESQUITERPENE	0.07		
12	41.10	SESQUITERPENE	0.05		
13	41.24	SESQUITERPENE	0.01		
14	42.12	alpha-GUAIENE	13.60	11.0 - 16.0	
15	42.15	beta-ELEMENE	1.07		
16	42.22	beta-CARYOPHYLLENE	3.33	2.0 - 5.0	3.33
17	43.09	SESQUITERPENE	0.02		
18	43.60	SESQUITERPENE	0.04		
19	43.93	SESQUITERPENE	0.04		
20	44.67	alpha-PATCHOULENE	13.05		
21		SEYCHELLENE			
22	45.07	SESQUITERPENE	0.05		
23	45.70	gamma-PATCHOULENE	0.95		
24	46.22	SESQUITERPENE	0.09		
25	46.64	alpha-HUMULENE	0.59		
26	46.79	SESQUITERPENE	0.44		
27	47.02	E-beta-FARNESENE	0.58		
28		SESQUITERPENE			
29	47.34	SESQUITERPENE	0.03		
30	47.91	SESQUITERPENE	0.01		
31	48.17	CALARENE ISOMER	0.17		
32	48.51	SESQUITERPENE Mw=202	0.13		
33	48.80	ACIPHYLLENE	2.63		
34	49.10	PATCHOULENE ISOMER	0.62		
35		beta-CHAMIGRENE			
36	49.32	SESQUITERPENE	0.03		
37	49.82	alpha-BULNESENE	17.41	13.0 - 21.0	
38	49.89	SESQUITERPENE	0.21		
39	50.15	alpha-SELINENE	0.17		
40	50.38	SESQUITERPENE Mw=202	0.04		
41	50.60	BICYCLOGERMACRENE	0.02		
42	50.77	SESQUITERPENE	0.01		
43	51.23	SESQUITERPENE	0.02		

- ORGANIC PATCHOULI EO - SKU 760 LOT 20 -

Peaks	RT (min)	Compound name	%	Standard (%)	Allergens (%)
44	51.76	SESQUITERPENE	0.03		
45	52.02	SESQUITERPENE	0.03		
46	52.25	7-epi-alpha-SELINENE	0.38		
47		SESQUITERPENE			
48	52.72	SESQUITERPENE Mw=202	0.09		
49	53.16	SESQUITERPENE Mw=202	0.06		
50	53.38	SESQUITERPENE Mw=202	0.19		
51	53.53	SESQUITERPENE Mw=202	0.05		
52	53.72	SESQUITERPENE Mw=202	0.05		
53	53.84	SESQUITERPENE Mw=202	0.17		
54	54.39	SESQUITERPENE Mw=202	0.08		
55	54.71	SESQUITERPENE Mw=202	0.02		
56	55.23	SESQUITERPENE Mw=202	0.01		
57	55.55	SESQUITERPENE Mw=202	0.12		
58	56.04	GERMACRENE B	0.03		
59	56.55	SESQUITERPENE Mw=202	0.07		
60	56.91	SESQUITERPENIC COMPOUND	0.02		
61	57.31	SESQUITERPENIC COMPOUND	0.02		
62	59.50	SESQUITERPENIC COMPOUND	0.06		
63	60.37	AROMATIC COMPOUND	0.07		
64	60.70	AROMATIC COMPOUND	0.02		
65	61.05	AROMATIC COMPOUND	0.02		
66	61.22	AROMATIC COMPOUND	0.01		
67	61.91	SESQUITERPENIC OXIDE	0.22		
68	62.32	SESQUITERPENIC COMPOUND	0.02		
69	63.36	SESQUITERPENIC COMPOUND	0.02		
70	63.72	SESQUITERPENIC COMPOUND	0.03		
71	64.03	SESQUITERPENIC COMPOUND	0.06		
72	64.52	CARYOPHYLLENE OXIDE	0.33		
73	64.97	SESQUITERPENIC COMPOUND	0.01		
74	65.44	SESQUITERPENIC COMPOUND	0.03		
75	65.67	COMPOUND Mw=200	0.03		
76	66.22	AROMATIC COMPOUND	0.02		
77	66.79	SESQUITERPENIC COMPOUND	0.02		
78	67.48	EPOXY-6,7-HUMULENE	0.05		
79	67.79	AROMATIC COMPOUND	0.03		
80	68.17	SESQUITERPENIC COMPOUND	0.01		
81	68.51	SESQUITERPENIC COMPOUND	0.02		
82	69.69	SESQUITERPENIC COMPOUND	0.04		
83	69.90	SESQUITERPENIC COMPOUND	0.04		
84	70.19	SESQUITERPENIC COMPOUND	0.01		
85	70.35	SESQUITERPENIC COMPOUND	0.04		
86	70.80	SESQUITERPENIC COMPOUND	0.06		

- ORGANIC PATCHOULI EO - SKU 760 LOT 20 -

Peaks	RT (min)	Compound name	%	Standard (%)	Allergens (%)
87	71.04	NORPATCHOULENOL	0.66	0.35 - 1.0	
88	71.33	1,5-epoxy-alpha-GUAIENE	0.35		
89	71.53	AROMATIC COMPOUND	0.01		
90	71.76	AROMATIC COMPOUND	0.05		
91	72.16	SESQUITERPENIC COMPOUND	0.07		
92	72.48	AROMATIC COMPOUND	0.04		
93	72.75	SESQUITERPENIC COMPOUND	0.03		
94	73.16	SESQUITERPENOL	0.22		
95	73.30	BULNESOL ISOMER	0.52		
96	73.46	SESQUITERPENIC COMPOUND	0.02		
97	73.64	AROMATIC COMPOUND	0.03		
98	73.83	SESQUITERPENIC COMPOUND	0.07		
99	74.09	SESQUITERPENIC COMPOUND	0.01		
100	74.21	SESQUITERPENIC COMPOUND	0.12		
101	74.73	PATCHOULOL	29.61	27.0 - 35.0	
102	74.81	COMPOUND Mw=222	0.24		
103	75.03	COMPOUND Mw=220	0.19		
104	75.42	COMPOUND Mw=222	0.05		
105	75.67	COMPOUND Mw=218	0.10		
106	75.84	COMPOUND Mw=222	0.22		
107	76.01	POGOSTOL	2.05	1.0 - 2.5	
108	76.29	SESQUITERPENIC COMPOUND	0.03		
109	76.60	SESQUITERPENIC COMPOUND	0.06		
110	76.97	SESQUITERPENIC COMPOUND	0.04		
111	77.08	SESQUITERPENIC COMPOUND	0.04		
112	77.24	SESQUITERPENIC COMPOUND	0.02		
113	77.44	AROMATIC COMPOUND	0.05		
114	77.71	AROMATIC COMPOUND	0.02		
115	78.03	EUDESMA-7(11)-EN-4-OL	0.09		
116	78.18	beta-NOOTKATOL	0.10		
117	78.33	SESQUITERPENIC COMPOUND	0.03		
118	78.80	PATCHOULENONE	0.15		
119	79.00	SESQUITERPENIC COMPOUND	0.01		
120	79.30	AROMATIC COMPOUND	0.03		
121	79.63	SESQUITERPENIC COMPOUND	0.04		
122	79.78	SESQUITERPENIC COMPOUND	0.01		
123	80.09	SESQUITERPENIC COMPOUND	0.17		
124	80.56	SESQUITERPENONE	0.06		
125	81.62	SESQUITERPENIC COMPOUND	0.01		
126	81.86	SESQUITERPENIC COMPOUND	0.01		
127	82.76	AROMATIC COMPOUND	0.02		
128	82.90	AROMATIC COMPOUND	0.03		
129	83.20	AROMATIC COMPOUND	0.07		

- ORGANIC PATCHOULI EO - SKU 760 LOT 20 -

Peaks	RT (min)	Compound name	%	Standard (%)	Allergens (%)
130	83.68	SESQUITERPENIC COMPOUND	0.07		
131	84.17	AROMATIC COMPOUND	0.03		
132	84.60	SESQUITERPENIC COMPOUND	0.19		
133	84.83	SESQUITERPENIC COMPOUND	0.02		
134	85.18	SESQUITERPENIC COMPOUND	0.09		
135	85.42	SESQUITERPENIC COMPOUND	0.01		
136	85.97	SESQUITERPENIC COMPOUND	0.02		
137	86.07	SESQUITERPENIC COMPOUND	0.05		
138	87.47	SESQUITERPENONE	0.02		
139	88.05	SESQUITERPENIC COMPOUND	0.08		
140	88.54	SESQUITERPENIC COMPOUND	0.02		
141	89.13	SESQUITERPENIC COMPOUND	0.02		
142	89.49	POGOSTONE	1.46		
143	89.90	PHYTOL	0.05		
144	90.71	AROMATIC COMPOUND	0.02		
145	94.41	CORYMBOLONE	0.03		
		TOTAL	99.77		3.76