



CERTIFICATE of ANALYSIS (COA)

COMMON NAME	Frankincense, Somalia - Organic
LATIN NAME	<i>Boswellia carteri</i>
COUNTRY OF ORIGIN	Somalia
CULTIVATION METHOD	Certified Organic (USDA, NOP)
TYPE	Essential Oil
EXTRACTION METHOD	Hydrodistilled
PLANT PART	Resin
USE	Aromatherapy, Natural Perfumery, Incense.

SKU	334
LOT #	9
MANUFACTURING DATE	May 2023
BEST BY DATE	May 2026

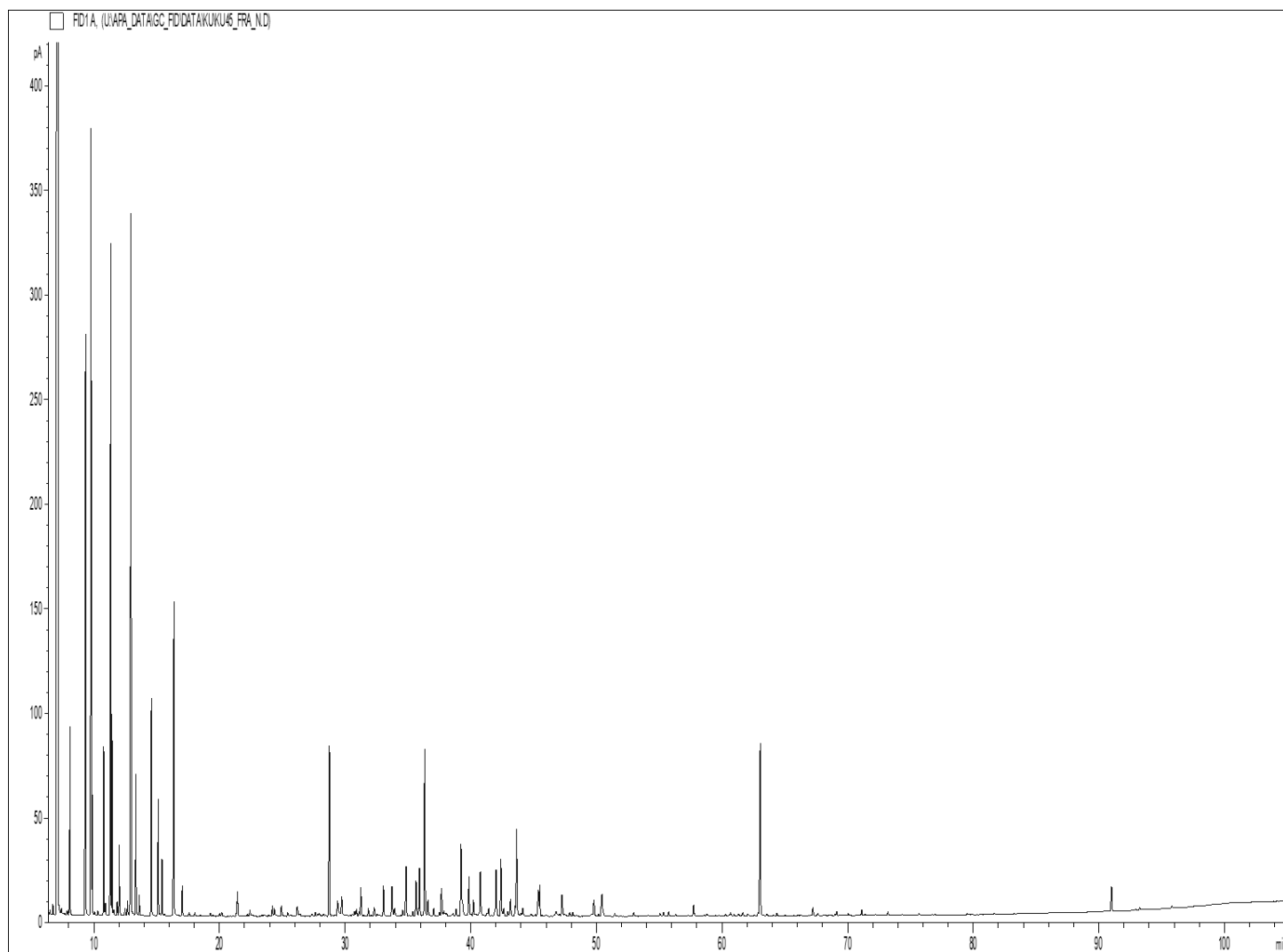
	SPECIFICATIONS (Range)	
SPECIFIC GRAVITY @20°C	0.84-0.89	0.867
REFRACTIVE INDEX @20°C	1.45-1.48	1.4689
OPTICAL ROTATION @20°C	<i>na</i>	-3.85°

PHYSICAL APPEARANCE	Transparent liquid	<i>Conforms</i>
COLOR	Colorless to pale yellow	<i>Conforms</i>
ODOR	Slightly sweet, woody with citrus undertones.	<i>Conforms</i>
SOLUBILITY	Soluble in alcohol and fixed oils	
SPECIAL USE INSTRUCTIONS	Dilute before use. Refrigerate to preserve freshness.	

PRIMARY CONSTITUENTS	Alpha-pinene, Limonene.
----------------------	-------------------------

THIRD PARTY LAB ANALYSIS (GCMS)

CHROMATOGRAPHIC PROFILE :



- ORGANIC FRANKINCENSE EO - SKU. 334 LOT 9 -

Peaks	RT (min)	Compound name	%	Standard (%)	Allergens (%)
1	5.24	COMPOUND Mw=124	0.03		
2	6.51	ALIPHATIC ESTER	0.03		
3	6.75	TRICYCLEN	0.08		
4	7.15	alpha-PINENE	48.37		48.37
5	7.20	alpha-THUYENE	0.89		
6	7.42	TOLUENE	0.06		
7	7.87	alpha-FENCHENE	0.03		
8	8.01	TERPENE ISOMER	0.03		
9	8.10	CAMPHENE	0.96		
10	9.34	beta-PINENE	3.70		3.70
11	9.79	SABINENE	5.43		
12	9.87	PINADIENE	0.73		
13	10.05	THUYA-2,4-DIENE	0.04		
14	10.32	p-MENTH-2-ENE	0.05		
15	10.80	delta3-CARENE	1.06		
16	10.92	OCTANE, 1-METHOXY-	0.09		
17	11.35	beta-MYRCENE	5.15		
18	11.46	alpha-PHELLANDRENE	1.01		
19	11.58	psi-LIMONENE	0.05		
20	11.87	o-CYMENE	0.10		
21	12.03	alpha-TERPINENE	0.50		0.50
22	12.49	1,8-CINEOLE, 2,3-DEHYDRO-	0.05		
23	12.68	MENTHATRIENE ISOMER	0.11		
24	12.97	LIMONENE	6.20		6.20
25	13.35	1,8-CINEOLE	1.01		
26		beta-PHELLANDRENE			
27	13.62	1,3,8-p-MENTHATRIENE	0.16		
28	14.59	cis-beta-OCIMENE	1.49		
29	15.13	gamma-TERPINENE	0.83		
30	15.43	trans-beta-OCIMENE	0.40		
31	16.21	m-CYMENE	0.01		
32	16.37	p-CYMENE	2.38		
33	17.04	TERPINOLENE	0.23		0.23
34	17.59	DIMETHYLSTYRENE ISOMER	0.03		
35	18.05	CYMENE ISOMER	0.03		
36	19.27	PINOL	0.03		
37	20.04	COMPOUND Mw=138	0.02		
38	20.19	COMPOUND Mw=138	0.04		
39	21.34	ROSE cis-OXIDE	0.02		
40	21.44	DECANE, 1-METHOXY-	0.20		
41	22.42	ALLO-OCIMENE	0.08		
42	22.65	1-OCTEN-3-YL ACETATE	0.02		
43	23.40	TERPENIC OXIDE	0.02		

- ORGANIC FRANKINCENSE EO - SKU. 334 LOT 9 -

Peaks	RT (min)	Compound name	%	Standard (%)	Allergens (%)
44	23.54	COMPOUND Mw=150	0.03		
45	23.92	COMPOUND Mw=152	0.02		
46	24.22	COMPOUND Mw=122	0.08		
47	24.37	o-METHYLANISOLE	0.09		
48	24.95	PERILLENE	0.10		
49	25.43	endo-ISOPINOCAMPHONE	0.04		
50	25.68	COMPOUND Mw=152	0.03		
51	26.19	alpha,p-DIMETHYLSTYRENE	0.12		
52	26.39	alpha-THUYONE	0.04		
53	27.36	5-HEPTEN-2-OL, 6-METHYL-	0.04		
54	27.63	alpha-CUBEBENE	0.04		
55	27.83	KETONIC COMPOUND	0.03		
56	27.95	AROMATIC COMPOUND	0.04		
57	28.30	delta-ELEMENE	0.03		
58	28.77	OCTYL ACETATE	1.60		
59	29.16	ISOLEDENE	0.01		
60	29.30	alpha-CAMPHOLENAL	0.32		
61	29.74	alpha-COPAENE	0.14		
62	30.60	COMPOUND Mw=152	0.03		
63	30.76	CAMPHOR	0.06		0.06
64	30.91	PINOCAMPHONE	0.08		
65	31.12	alpha-BOURBONENE	0.04		
66	31.27	beta-BOURBONENE	0.27		
67	31.86	alpha-GURJUNENE	0.08		
68	32.07	COMPOUND Mw=152	0.02		
69	32.32	ISOPINOCAMPHONE	0.09		
70	32.54	beta1-CUBEBENE	0.03		
71	33.06	LINALOOL	0.28		0.28
72	33.74	1-OCTANOL	0.36		
73	33.95	trans-p-MENTH-2-EN-1-OL	0.10		
74	34.46	NOPINONE	0.02		
75	34.60	epsilon-CADINENE	0.07		
76	34.86	BORNYL ACETATE	0.48		
77	35.39	alpha-trans-BERGAMOTENE	0.05		
78	35.66	beta-ELEMENE	0.37		
79	35.93	beta-CARYOPHYLLENE	0.50		0.50
80	36.35	TERPINENE-4-OL	1.54		
81	36.61	6,9-GUAIADIENE	0.18		
82	37.06	TERPENIC COMPOUND	0.08		
83	37.50	SESQUITERPENE	0.04		
84	37.68	MYRTENAL	0.30		
85	37.88	cis-p-MENTH-2-EN-1-OL	0.06		
86	37.98	SABINAKETONE	0.04		

- ORGANIC FRANKINCENSE EO - REF. 334 LOT 9 -

Peaks	RT (min)	Compound name	%	Standard (%)	Allergens (%)
87	38.11	CADINA-3,5-DIENE	0.03		
88	38.59	GERMACRENE A	0.05		
89	38.84	ALLO-AROMADENDRENE	0.08		
90	39.24	trans-PINOCARVEOL	0.78		
91	39.36	cis-VERBENOL	0.16		
92	39.87	trans-p-MENTHA-2,8-DIEN-1-OL	0.40		
93	40.03	AROMATIC COMPOUND	0.03		
94	40.23	ZONARENE	0.16		
95	40.35	SESQUITERPENE	0.02		
96	40.70	alpha-HUMULENE	0.20		
97	40.78	trans-VERBENOL	0.36		
98	41.04	gamma-SELINENE	0.02		
99	41.30	LAVANDULAL	0.04		
100	41.43	MYRTENYL ACETATE	0.09		
101	41.85	gamma-MUUROLENE	0.15		
102	42.03	alpha-TERPINEOL	0.34		0.34
103	42.10	BORNEOL	0.09		
104	42.41	VERBENONE	0.60		
105	42.64	LEDENE	0.10		
106	42.97	MENTHADIENOL ISOMER	0.06		
107	43.17	GERMACRENE D	0.19		
108	43.54	MUUROLADIENE ISOMER	0.09		
109	43.67	p-MENTHA-1(7),2-DIEN-8-OL	0.71		
110		beta-SELINENE			
111	43.90	alpha-SELINENE	0.17		
112	44.02	alpha-MUUROLENE	0.04		
113	44.15	CARVONE	0.11		0.11
114	44.80	trans-PIPERITOL	0.05		
115	45.15	trans-ISOPIPERITENOL	0.03		
116	45.39	GERANYL ACETATE	0.17		0.17
117	45.40	gamma-CADINENE	0.09		
118	45.50	delta-CADINENE	0.29		
119	45.66	1-DECANOL	0.01		
120	45.98	p-METHYLACETOPHENONE	0.03		
121	46.81	CUMINAL	0.10		
122	47.07	CADINA-1,4-DIENE	0.02		
123	47.28	MYRTENOL	0.24		
124	47.46	AROMATIC COMPOUND	0.05		
125	47.88	MYRTENOL ISOMER	0.04		
126	48.15	trans-SABINOL	0.05		
127	48.42	COMPOUND Mw=124	0.02		
128	49.68	CALAMENENE	0.05		
129	49.82	trans-CARVEOL	0.18		

- ORGANIC FRANKINCENSE EO - SKU. 334 LOT 9 -

Peaks	RT (min)	Compound name	%	Standard (%)	Allergens (%)
130	50.19	m-CYMENE-8-OL	0.02		
131	50.46	p-CYMENE-8-OL	0.14		
132	50.50	TOLUENE, 3,5-DIMETHOXY-	0.15		
133	50.55	GERANIOL	0.03		0.03
134	51.47	cis-CARVEOL	0.03		
135	52.98	Epi-CUBEBOL	0.03		
136	55.08	PALUSTROL	0.04		
137	55.36	alpha-PHELLANDRENE DIMER ISOMER	0.04		
138	55.77	CUBEBOL	0.04		
139	56.32	SESQUITERPENIC COMPOUND	0.02		
140	57.76	CARYOPHYLLENE OXIDE	0.12		
141	58.79	PERILLYL ALCOHOL	0.03		
142	59.74	alpha-PHELLANDRENE DIMER ISOMER	0.01		
143	60.30	SESQUITERPENOL	0.02		
144	60.70	EPOXY-6,7-HUMULENE	0.03		
145	60.97	NEROLIDOL	0.02		
146	61.32	SESQUITERPENIC COMPOUND	0.03		
147	61.66	Epi-CUBENOL	0.04		
148	62.07	CUBENOL	0.03		
149	62.88	ELEMOL	0.03		
150	63.06	VIRIDIFLOROL	1.88		
151	63.57	CUMINOL	0.03		
152	64.38	SESQUITERPENIC COMPOUND	0.03		
153	66.32	DITERPENE	0.01		
154	67.25	T-CADINOL	0.09		
155	67.66	5-epi-7-epi-alpha-EUDESOL	0.02		
156	68.07	SESQUITERPENOL	0.02		
157	69.02	CARVACROL	0.02		
158	69.15	GERANYLGERANIADIENE	0.04		
159	69.75	alpha-EUDESOL	0.01		
160	70.06	beta-EUDESOL	0.02		
161	70.17	alpha-CADINOL	0.01		
162	71.13	NEOCEMBRENE	0.06		
163	71.42	GERANYLGERANIADIENE ISOMER	0.02		
164	72.21	AROMATIC COMPOUND	0.02		
165	73.22	COMPOUND Mw=168	0.04		
166	74.35	AROMATIC COMPOUND	0.01		
167	75.70	VERTICILLA-4,7,11-TRIENE	0.02		
168	76.94	AROMATIC COMPOUND	0.01		
169	79.54	AROMATIC COMPOUND	0.01		
170	91.02	INCENSYL ACETATE	0.26		
171	92.92	KETONIC COMPOUND	0.01		
172	93.26	CEMBRENOL	0.03		

- ORGANIC FRANKINCENSE EO - SKU. 334 LOT 9 -

Peaks	RT (min)	Compound name	%	Standard (%)	Allergens (%)
173	95.83	INCENSOL	0.03		
		TOTAL	99.75		60.49